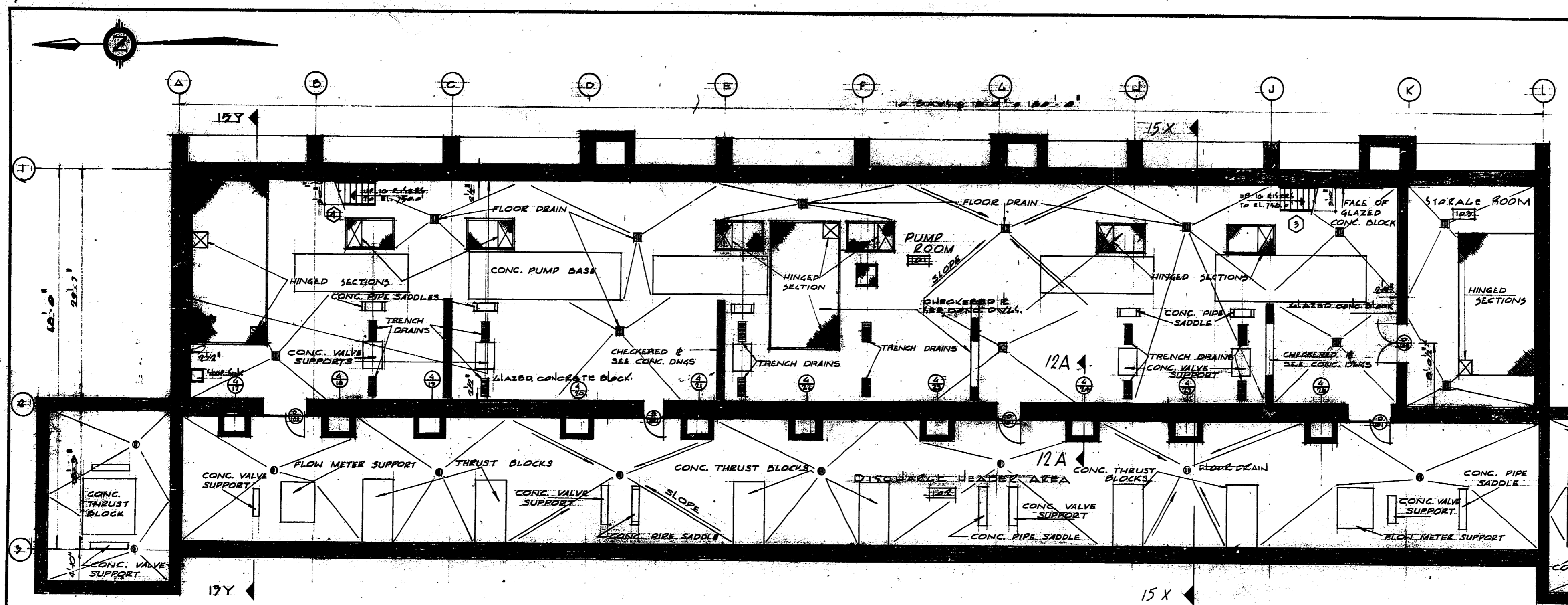


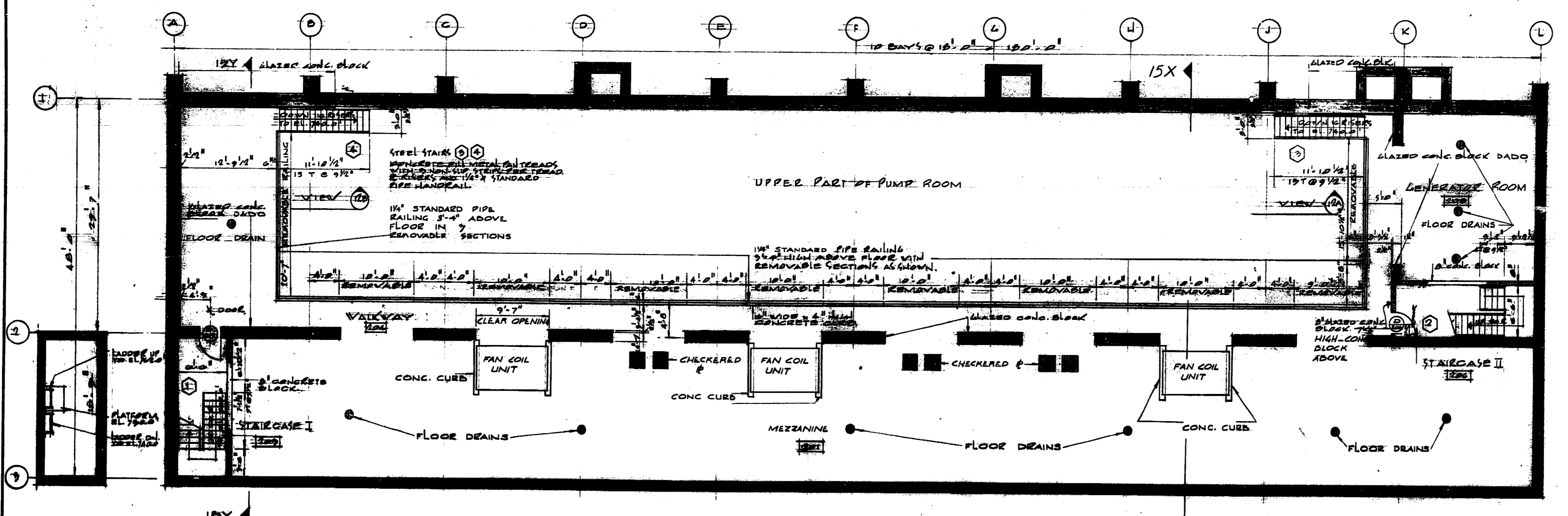
ME-19

Rev. or Drawing No.

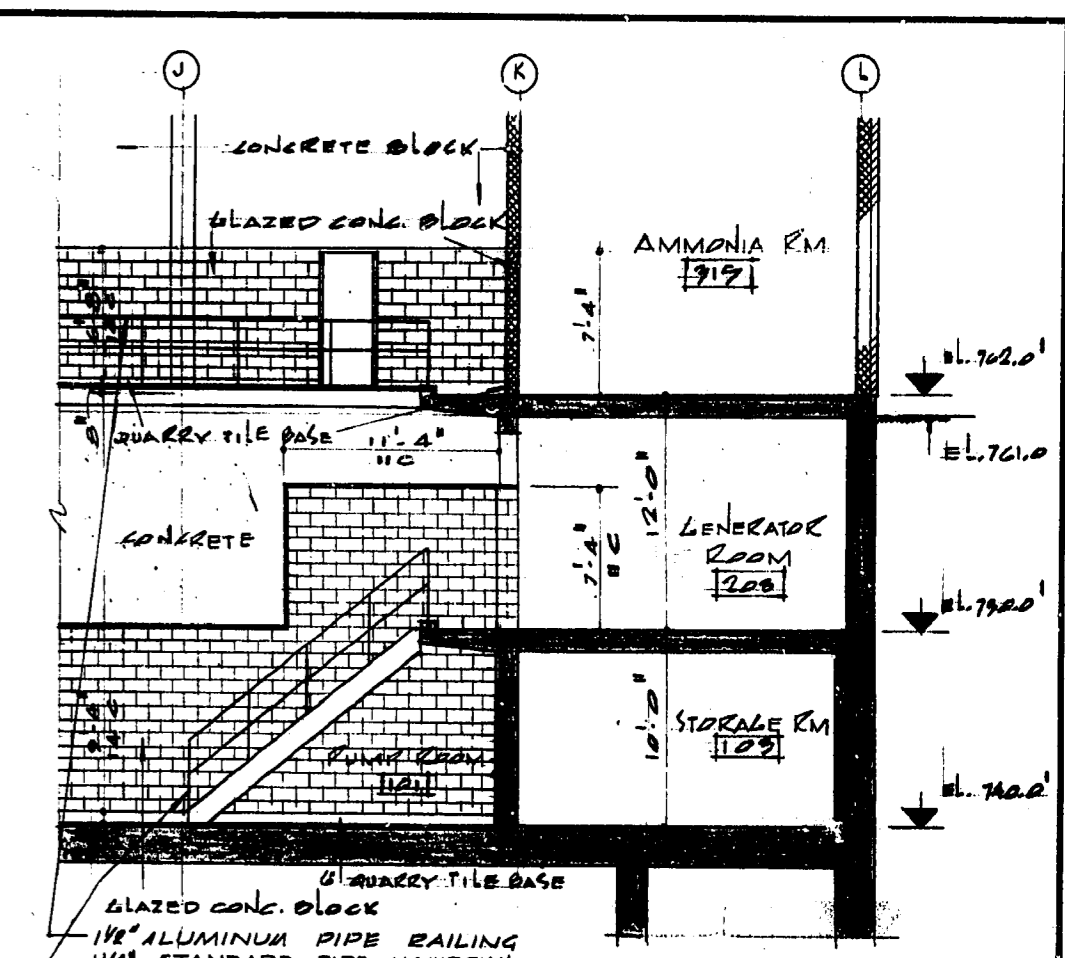
DETAILS SUPER STRUCTURE - PLANS ABOVE ELEV'S. 740.00 & 750.00



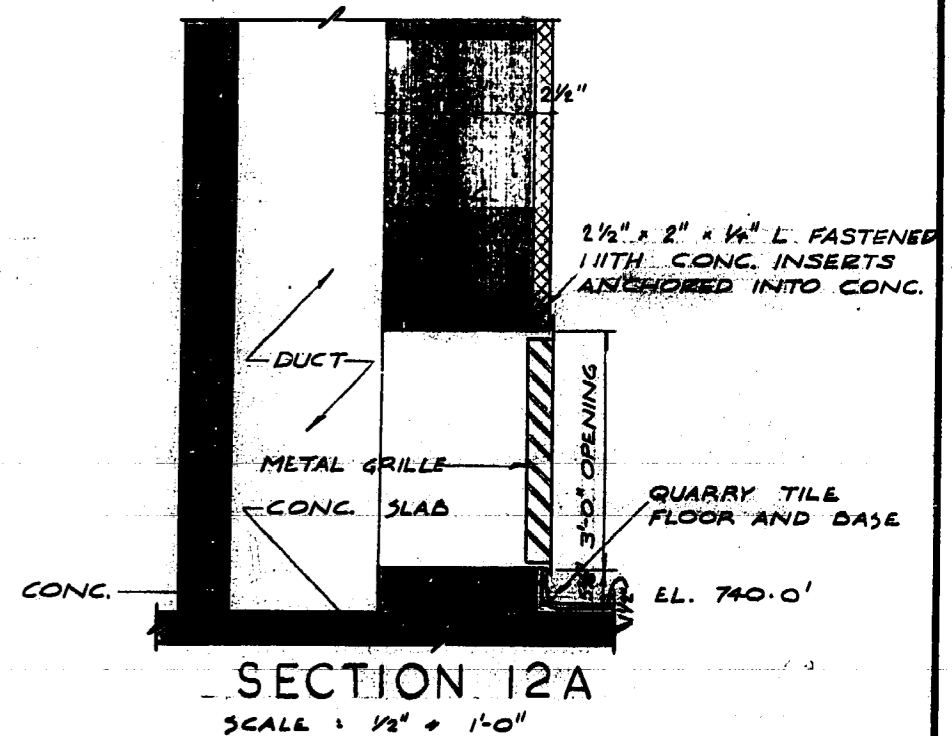
PLAN ABOVE ELEV. 740.0 SCALE 1/8" = 1'-0"



PLAN ABOVE ELEV. 750.0 SCALE 1/8" = 1'-0"



VIEW 12A (VIEW 12B SIMILAR BUT OPPOSITE HAND) SCALE 1/8" = 1'-0"



SECTION 12A SCALE 1/2" = 1'-0"



REVISED AS BUILT, JUNE - 1965	
THE METROPOLITAN CORPORATION OF GREATER WINNIPEG WATERWORKS AND WASTE DISPOSAL DIVISION	
METRO EAST PUMPING STATION AND RESERVOIR	
CONTRACT A - PUMPING STATION SUPERSTRUCTURE - PLANS ABOVE ELEVATIONS 740.00 AND 750.00	
APPROVED <i>J. W. MacLaren</i> JAMES T. MACLAREN ASSOCIATES ENGINEERS TORONTO	APPROVED <i>James B. ...</i> DESIGN ENGINEER
<i>...</i> TEMPLETON ENGINEERING COMPANY PROFESSIONAL ENGINEERS WINNIPEG	<i>...</i> ENGINEER OF WATERWORKS DIRECTOR & CHIEF ENGINEER
DATE JUNE 22, 1962	SCALE AS SHOWN
	DWG. No. 12 OF 31
	ME-19